

WELCOME HOME

— APPLYING FOR —

STANFORD GRADUATE HOUSING



2024-25



(Clockwise from left) Students in Study Room, Rains Houses, Students in Study Area, Escondido Village Graduate Residences, Blackwelder Lounge

thelottery.stanford.edu

TABLE OF CONTENTS

- Applying for Housing3
- Assignment Process and Priorities4-5
- On-Campus Graduate Housing Options 6-15
- Residence Choices and Rates 16-19
- Graduate Housing Map 20-21
- Off-Campus Graduate Housing Options 22-23
- Move-in Information24
- Campus Dining25-26
- Contact Information27



APPLYING FOR GRADUATE HOUSING

HOW TO APPLY

Apply online through Axess (axess.stanford.edu). Submit your application between **April 3, 2024**, and **May 1, 2024**, to participate in the first-round Lottery.

- New students are only guaranteed housing for 2024-2025 if they apply by the May 1 deadline, and select “assign me to any residence for which I am eligible” as their final application choice.
- Continuing students who are eligible to renew must do so by the May 1 deadline.

If you apply after the May 1 deadline, you will receive a sequential application number based on the date you submit your application.

You will need a **SUNet ID** to apply for housing. Instructions for obtaining a SUNet ID are included in your admission mailing. **Please set up your SUNet ID immediately after receiving your letter of admission.** You should be able to apply for housing in Axess within about 48 hours of creating your SUNet ID.

On your application, you will select the quarter you want your housing to start, your category of housing (single, couple without children or student with children), your requested move-in date and rank all your residence choices.

To improve your chances of being assigned to your desired housing, rank ALL apartment locations in the order you would like to be assigned until you have no further preferences.

If you need housing for summer 2024, you will need to submit a second application in Axess for just that quarter.

DISABILITY/MEDICAL ACCOMMODATIONS

If you, your spouse, partner or child have particular housing needs due to a documented disability or medical condition, you may participate in the Medical Accommodation Lottery, which takes place prior to the main Lottery. More information is available at rde.stanford.edu/studenthousing/medical-accommodations

- Register with the Office of Accessible Education by **April 10.** oaeconnect.stanford.edu
- Submit a housing accommodation request form with the Office of Accessible Education by **April 22.**
- Submit a housing application in Axess by **April 22.**

REASSIGNMENTS

After the Lottery assignments are announced, students may apply for reassignment if they wish to change their assignment. An initial reassignment process will take place in July as part of the second round. If you are not reassigned in July, you can reapply for on-going reassignments that are made on a rolling basis each quarter after the demand from unassigned students is met. Your position in the rolling reassignment process is based on the date you apply.

If your family status changes, you should apply for housing in your new category as soon as you know about the change.

ROOMMATES IN SHARED HOUSING

If you are a single student assigned to a shared apartment, your roommate will be matched based on the roommate preferences you list on your application.

If you would like to live with specific friends, you are able to apply with a group of up to four students. If all group members have the same priority level and are the same gender, they are likely to be kept together.

rde.stanford.edu/studenthousing/applying-group-graduate-housing

For information on applying with friends of different genders:

rde.stanford.edu/studenthousing/graduate-gender-neutral-housing

2024-25 HOUSING APPLICATION DEADLINES

QUARTER	ASSIGNMENT ROUND	APPLICATION DEADLINE	ASSIGNMENTS ANNOUNCED
Autumn	Medical accommodations	Now - April 10 to register with the OAE and April 22 to apply for housing and file OAE request	May 25
	First-round Lottery and renewal assignments	May 1	May 25
	Second-round assignments	July 3	July 20
	Rolling assignments	July 4 - October 25	July 22 - October 25
Winter	First-round assignments	October 25 (apply as early as possible beginning September 25)	November 16
	Rolling assignments	October 26 - February 7	November 18 - February 7
Spring	First-round assignments	February 7, 2025 (apply as early as possible beginning January 7)	March 1
	Rolling assignments	February 8 - May 2	March 3 - May 2

Submit your 2024-25 application for autumn quarter in Axess beginning on April 3, 2024.



HOW ASSIGNMENTS ARE MADE

R&DE Student Housing uses a lottery to assign housing to graduate students. You are assigned according to (1) your assignment priority level, (2) a random lottery number and (3) your housing choices.

When the program gets to your priority level and lottery number, it will place you into the highest available residence on your preference list. If all of the residences you have listed are full, you will be assigned by your final choice.

If you are assigned out of the final choice “assign me to any residence for which I am eligible,” you could be assigned to any on-campus housing option (except Munger, the GSB Residences, the two-bedroom triples in EVGR [pilot program for 24-25], and the premium studios for single graduate students, due to their price) or Oak Creek. The system will assign you to a residence that is left over at the end of the process. With the exception of the Oak Creek apartments, you will not be assigned to the off-campus subsidized housing unless you specifically list it.

If you select “assign me only to the residences I have listed,” you will not be assigned if we cannot assign you to a residence you have listed.

Students with children do not select a final choice on their applications.

In either case, we strongly recommend that you rank as many choices as possible to improve your chance of being assigned by your preferences.

FIRST-YEAR GRADUATE STUDENTS

If you are enrolled in a Stanford graduate degree program for the first time, housing is guaranteed for your first year if:

- You apply by the Lottery deadline – **May 1, 2024**.
- You select “assign me to any residence for which I am eligible” as your final application choice. (Students selecting this choice will not be assigned to Munger, the GSB Residences, or the premium studios for single students unless they have listed them. Students selecting this choice could be assigned to Oak Creek but will not be assigned to other off-campus subsidized housing unless they have listed those options.)

If you have restricted housing choices, and you are not assigned in the first round, you will still be considered with high priority for housing before continuing students.

If you apply after the deadline, you will have high priority and your position on the list will be determined by the date you apply.

ORDER FOR ASSIGNING STUDENT HOUSING

1. Student staff and students needing medical accommodations
2. Students living on campus with medium priority who are renewing their spring housing for the next year
3. Students living in subsidized off-campus housing with medium priority who apply for the same category
4. Guaranteed first-year students who applied by the deadline and selected “assign me to any residence for which I am eligible” as their final application choice
5. First-year students with high priority who limited their housing choices or applied after the Lottery deadline
6. Students with medium priority who are not renewing
7. Students with low priority
8. Students with no priority
9. Non-matriculated students

Your first-year assignment priority is only effective during your first academic year of graduate study. It cannot be used later, even if you are admitted to an additional degree program.

Students beginning a second graduate degree program are considered continuing students. Co-terminal students are considered continuing students with a low priority and are not guaranteed housing.

CONTINUING STUDENTS

After Your First Year

Your options after your first year are based on your housing priority. (See chart on next page.)

- Students with medium priority who want to stay in the same apartment may be able to renew annually and bypass the first-round Lottery if they are living in a full-year building and keep their summer contract.
- Students who want to change residences, who don’t want to keep their summer 2024 contract or are not eligible to renew should join the first-round Lottery.

PRIORITY BY DEGREE

Random Lottery Number

The best numbers (lowest numbers) are randomly assigned to students who apply for housing by the Lottery deadline. Students who miss the first-round deadline will receive a sequential number based on the date their application is submitted.

Assignment Priority is determined by:

1. Your student status (first-year or continuing graduate student)
2. Your degree program (PhD, master’s, etc.)
3. The total number of years you have lived in graduate housing

PROGRAMS	HOUSING CATEGORY	YR 1	YR 2	YR 3	YR 4	YR 5	YR 6	YR 7+
Doctoral degree candidates	All categories	G/H	M	M	M	M	M	N
Medical students in the MD program	All categories	G/H	M	M	M	M	N	N
Law students in the JD program	All categories	G/H	M	M	N	N	N	N
Coterminal students	All categories	L	L	N	N	N	N	N
Master’s students	Single graduate	G/H	L	N	N	N	N	N
	Couple without children	G/H	L	N	N	N	N	N
	Student with children	G/H	M	N	N	N	N	N
Non-matriculated students	All categories	P	P	P	P	P	P	P

CHART LEGEND

G/H = High Priority | Can apply through Lottery

- Students in the first year of their first graduate degree program at Stanford (does not include coterminal students) are guaranteed housing (G) if they apply by the Lottery deadline and are willing to accept any assignment.
- First-year students who miss the deadline or are not willing to accept any assignment are no longer guaranteed, but are given a high priority (H) and are considered for housing before students with lower priority levels.

M = Medium Priority | Can renew if in on-campus housing

- Continuing doctoral students with priority years who have already had a year of guarantee or high priority.
- Master’s students applying for a second year of housing who are living in students with children housing.

L = Low Priority | Cannot renew but can apply through Lottery

- Master’s students applying for a second year of housing who are living in single graduate or couple without children housing.
- Coterminal students in the first two years of eligibility for graduate housing who have used their undergrad housing guarantee.

N = No Priority | Cannot renew but can apply through Lottery

- Students who have used their housing priority years.

P = Non-matriculated Priority | Cannot renew or apply for autumn until the Rolling Assignments round after the second round deadline in July.

- Non-degree seeking students who are enrolled as postdocs or visitors.

Regardless of their priority level, we are strongly encouraging all graduate students who need housing to apply for the Lottery.

Special Off-Campus Priority for Lottery 2024

Doctoral students living in the off-campus subsidized apartments who are applying for the same category and who have medium priority years remaining will have a special priority to on-campus housing and their off-campus residence, if available in the 2024 Lottery. They will be assigned ahead of first-year students.

RESIDENCE PRIORITIES

Some students have additional residential priority to specific graduate residences. They must list the choices on their application to receive the priority.

Law students will have priority to 50% of each type of housing within the Munger Graduate Residences.

GSB students have priority to the GSB Residences.

All students living in housing during the spring term will have priority to stay in their current residence if they list it and have a lottery number and priority level strong enough to be assigned in the assignment round.

ON-CAMPUS GRADUATE HOUSING OPTIONS

Graduate Housing

Stanford offers housing to single students, students with domestic partners of any gender and students with children. All housing is smoke-free. Pets are not allowed, although some animals are approved for medical reasons.

More information about housing options can be found at rde.stanford.edu/studenthousing/graduate-housing-options. The floor plans and photos in this section are representative samples. Your apartment may have variations.

Residential Renovations

The goal of R&DE's Maintenance Operations & Capital Projects (MCP) team is to ensure student comfort and safety in their campus homes. MCP provides routine maintenance and system upgrades year-round, with minimal disruption to students. However, some projects are so extensive that they can only be completed in unoccupied apartments. In these cases, students are relocated (temporarily or permanently) to other apartments/buildings to facilitate the renovations. R&DE will provide more detailed information about the project in the academic year before the scheduled start date. You can find information about upcoming projects through the 2028-2029 academic year on the [R&DE website](#).

In Every Apartment

Students can expect bedroom furnishings such as a bed, dresser, nightstand, desk, desk chair, and a closet. Kitchens are generally equipped with refrigerator/freezer, electric stove, oven and sink with garbage disposal. Living spaces are commonly furnished to include sofa, coffee table, dining room table with chairs, small counter-height table with chairs, or counter with chairs.

Residents pay no additional charge for utilities (water, heat, electricity, garbage, sewer). Wi-Fi is available in on-campus residences and is included in your technology fee (\$92/quarter).

In single graduate housing, students are generally assigned to a private bedroom. For 2024-25 there will be a pilot program in which we will offer a small number of EVGR premium two-bedroom, two-bath apartments with triple occupancy. One student will be assigned to a single private bedroom (with a full-sized, extra-long bed) and private bath while the other two students will share the second bedroom (with twin-sized, extra-long beds) and bath. Both the single bedroom option and the double bedroom option, that requires two students to share the same sleeping space, will be offered at a reduced rate and will only be assigned to those who specifically list them on their application. These options will not be included when students indicate they are willing to live in any option on their housing application. Since this is a pilot program, students who are assigned to these options will not be eligible to renew these housing assignments, as these room types may not be available in future years.



Munger Graduate Residences, Exterior



Lyman Graduate Residence, Bedroom

Lyman Graduate Residences
Located on the west side of campus, close to the Medical Center and the Science and Engineering Quad, this complex includes two residential buildings housing single students in two-bedroom, one-bath apartments. Common areas are located in the central commons building.

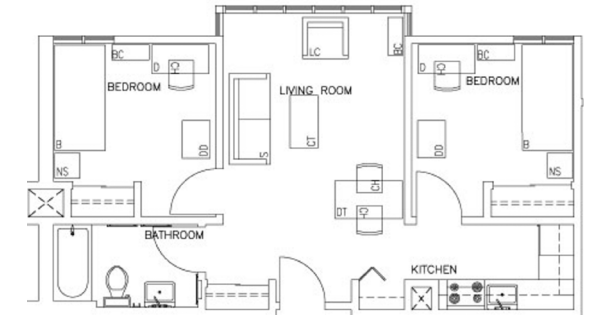
Lyman will undergo renovations starting in autumn 2024 and will continue through summer 2027. Students will move to a renovated unit in Lyman when the project reaches their apartment.



Lyman Graduate Residence, Living Room



Lyman Graduate Residences, Exterior



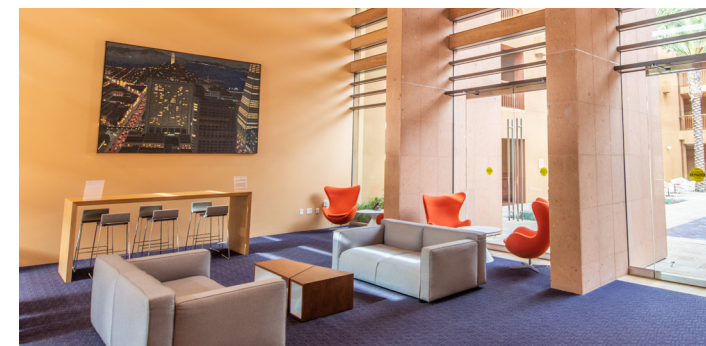
Lyman Graduate Residences, 2-Bedroom/1-Bath

GSB Residences

Stanford's Graduate School of Business (GSB) manages the GSB Residences, located across from the GSB on Jane Stanford Way.

Jack McDonald Hall and Schwab Residential Center offer studio apartments with shared kitchens. Most spaces are assigned to first-year GSB students.

Note: The GSB Residences are not automatically included if you indicate on the housing application that you are willing to be assigned anywhere.



GSB Residences, Jack McDonald Hall, Commons Interior



GSB Residences, Exterior

Munger Graduate Residence

Conveniently located, Munger's five apartment buildings are adjacent to the Law School and a short walk from White Plaza.

Studios and a limited number of one-bedroom apartments are available to couples. Studios, two- and four-bedroom apartments are available for single graduates. Each student has a private bedroom and bathroom. Premium studios are large enough to accommodate a dining table and chairs, while the standard studios have an eat-in counter with stools. Law students have priority to assignment for 50% of Munger spaces.

The Market at Munger, in Jacobson-Sorensen Hall, offers fresh produce, grab-and-go meals and a number of grocery and household items.



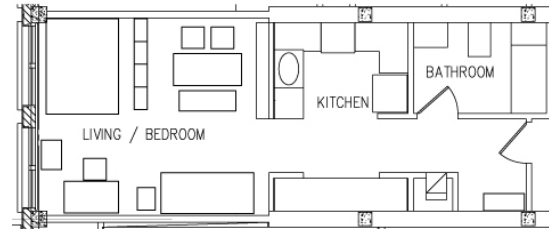
Munger Graduate Residence, Exterior



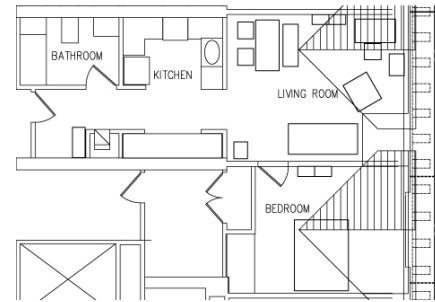
Munger Graduate Residence, Dining/Living Room



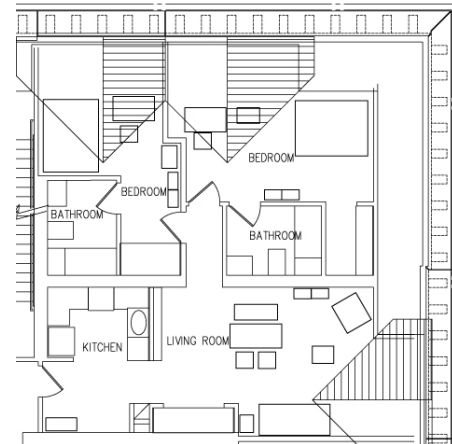
Munger Graduate Residence, Studio Apartment



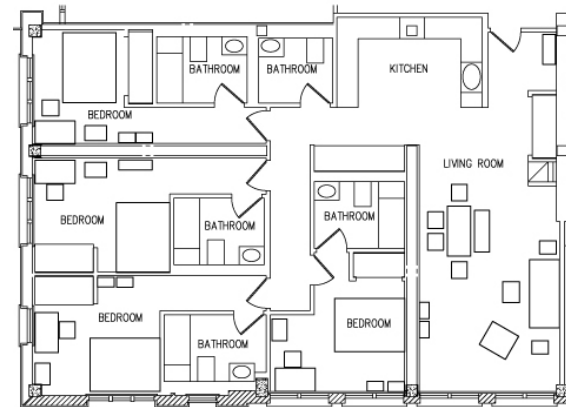
Munger Graduate Residence, Premium Studio/1-Bath



Munger Graduate Residence, 1-Bedroom/1-Bath



Munger Graduate Residence, 2-Bedroom/2-Bath



Munger Graduate Residence, 4-Bedroom/5-Bath

Note: Munger is not automatically included if you indicate on the housing application that you are willing to be assigned anywhere.



Kennedy Graduate Residences, Exterior



Kennedy Graduate Residences, Kitchen and Living Room

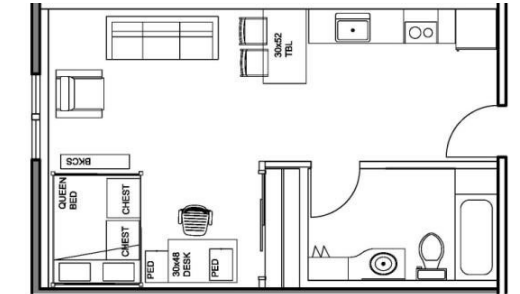


Kennedy Graduate Residences, Bedroom

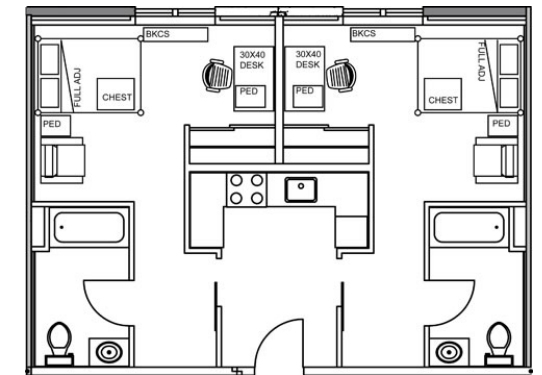
Kennedy Graduate Residences in Escondido Village

Apartments include premium two-bedroom, two-bath apartments with shared living room and kitchen, junior two-bedroom, two-bath units with shared kitchens and premium studios for single graduate students. Premium studios are available to couples and single parents with one child. Each student has a private bedroom and bathroom.

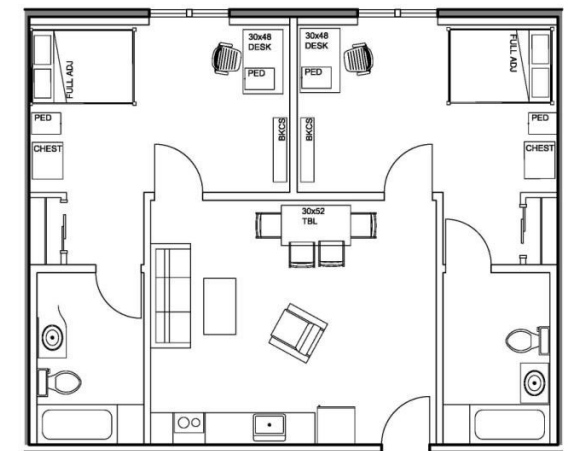
Note: The premium studios are not automatically included for single graduates if you indicate on the housing application that you are willing to be assigned anywhere.



Kennedy Graduate Residences, Premium Studio/1-Bath



Kennedy Graduate Residences, Junior 2-Bedroom/2-Bath



Kennedy Graduate Residences, Premium 2-Bedroom/2-Bath

Escondido Village & Escondido South Low-Rises

Home to couples, students or couples with children and single students in one- to four-bedroom apartments, these units are located in one- and two-story low-rise apartments arranged around grassy fields, picnic areas and communal courtyards. The two-, three-, and four-bedroom apartments have fenced in patios that open on to gated play areas. The one-bedroom, one-bedroom with den and studio apartments do not have fenced in patios or play areas. Couples without children are assigned to one-bedrooms and a limited number of one-bedrooms with den and two-bedroom apartments. Single students are assigned to two- and three-bedroom apartments with a private bedroom and shared bathroom, kitchen and living room. There are only two four-bedroom apartments available and these are assigned to students or couples with children.

All apartments in Escondido South have two stories. Escondido Village has a combination of one- and two-story apartments that are assigned interchangeably. All the apartments that have access to communal courtyards and play areas are two-story.

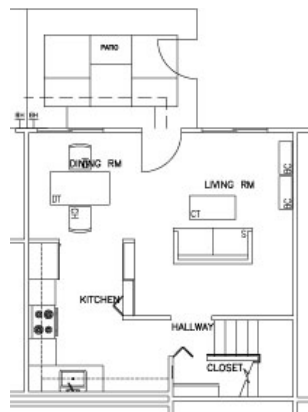
The low-rise apartments are in the midst of a multi-year renovation project. It is possible that some residents may need to relocate to a renovated low-rise apartment when their building is due for construction.



Escondido South Two-Story Low-Rises, Exterior



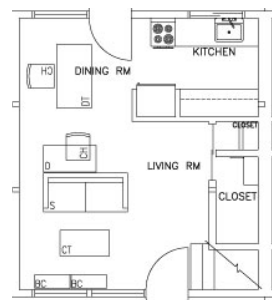
Escondido Village One-Story Low-Rises, Exterior



Escondido Village & South Low-Rises, 2-Bedroom/1-Bath - First Floor



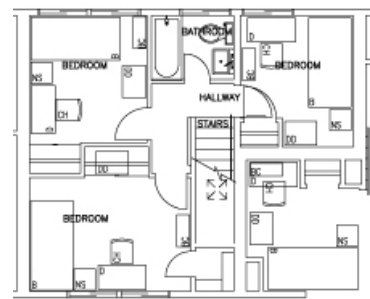
Escondido Village & South Low-Rises, 3-Bedroom/1-Bath - First Floor



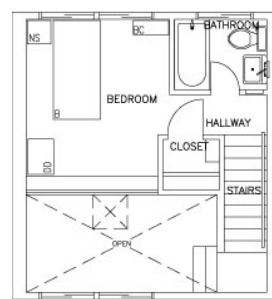
Escondido Village Low-Rises, 1-Bedroom/1-Bath - First Floor



Escondido Village & South Low-Rises, 2-Bedroom/1-Bath - Second Floor



Escondido Village & South Low-Rises, 3-Bedroom/1-Bath - Second Floor



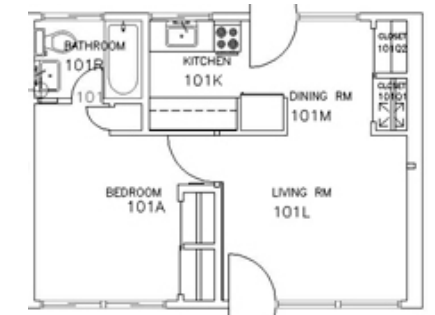
Escondido Village Low-Rises, 1-Bedroom/1-Bath - Second Floor



Escondido Village Low-Rises, Bedroom



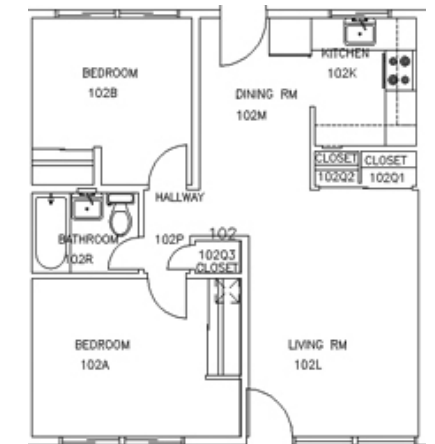
Escondido Village Low-Rises, Living Room



Escondido Village Low-Rises, 1-Bedroom/1-Bath



Escondido South Low-Rises, Living Room



Escondido Village Low-Rises, 2-Bedroom/1-Bath



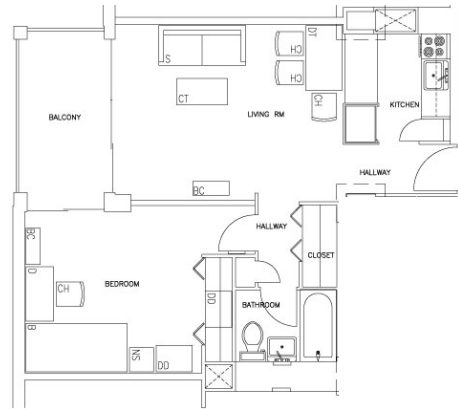
Escondido South Low-Rises, Bedroom



Escondido Village Low-Rises, 3-Bedroom/1-Bath



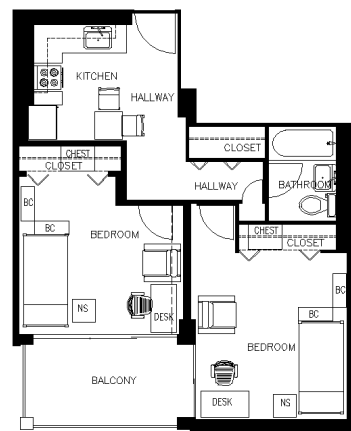
Escondido Village Mid-Rises, Exterior



Escondido Village Mid-Rises, 1-Bedroom/1-Bath for Couples without Children (except McFarland)



Escondido Village Mid-Rises, 1-Bedroom/1-Bath Compact for Couples without Children in McFarland



Escondido Village Mid-Rises, 2-Bedroom/1-Bath for Single Students in McFarland

Escondido Village Mid-Rises and High-Rises
 Five eight-story mid-rise apartment buildings — Abrams, Barnes, Hoskins, Hulme and McFarland — offer one-bedroom apartments for couples without children. Each apartment has a sliding glass door that opens onto a balcony. In McFarland, all units have been remodeled to enclose the kitchen and convert the living room into a second bedroom with a large closet and a locking bedroom door. McFarland is assigned as a junior two-bedroom, one-bath apartment for two single graduate students or as a one-bedroom, one-bath compact for a couple. Lobbies, lounges and other common spaces provide areas for social activities.

Escondido Village also includes two 12-story towers, Blackwelder and Quillen. Each building has 110 junior two-bedroom, one-bath apartments shared by two single students. Common spaces in each building include lounges, barbecue and picnic areas, computer clusters and a piano practice room. **Blackwelder and Quillen have just undergone major renovation projects. Blackwelder reopened in August 2023 and Quillen will reopen in August 2024.**



Escondido Village Mid-Rises, Bedroom



Escondido Village Mid-Rises, Living Room



Escondido Village High-Rises, Junior 2-Bedroom/1-Bath Apartment



Escondido Village High-Rises, Exterior



Escondido Village High-Rises, Interior



Escondido Village High-Rises, Interior

Escondido Village Studios

Six four-story buildings in Escondido Village accommodate 834 graduate students in single student and couples without children studio apartments. Each studio provides about 325 square feet of space and combines living and sleeping quarters that include a kitchen and private bathroom. Common areas in each building include lounges, computer clusters and laundry facilities.



Escondido Village Studios, Kitchen



Escondido Village Studios, 1-Bath



Escondido Village Studios, Living-Bedroom



Escondido Village Studios, Exterior

Escondido Village Graduate Residences

Escondido Village Graduate Residences (EVGR), which opened in 2020, is Stanford's newest on-campus residential community. Apartments include premium two-bedroom, two-bath apartments with shared living rooms and kitchens, junior two-bedroom, two-bath units with shared kitchens and premium studios. Couples are assigned to premium studios and a limited number of two-bedroom apartments. Single graduate students are assigned to all options and most have a private bedroom and bathroom. This year, a limited number of premium two-bedroom, two-bath apartments will be offered as reduced-rate triple occupancy apartments. One student will be assigned to a single private bedroom (with a full-sized, extra-long bed) and private bath while the other two students will share the second bedroom (with bunk-able twin-sized, extra-long beds) and bath.

Note: The premium studios and two-bedroom triples are not automatically included for single graduates if you indicate on the housing application that you are willing to be assigned anywhere.



Escondido Village Graduate Residences, Premium Studio



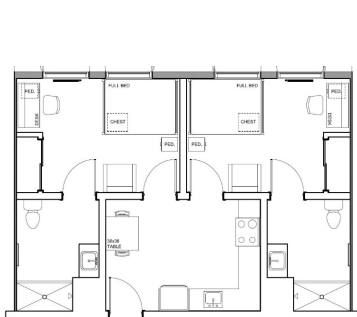
Escondido Village Graduate Residences, Kitchen



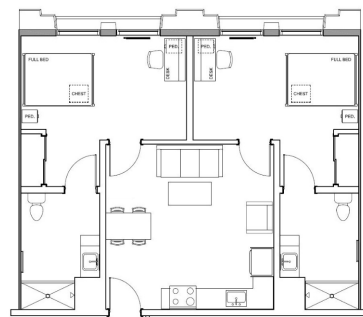
Escondido Village Graduate Residences, Bedroom



Escondido Village Graduate Residences, Exterior



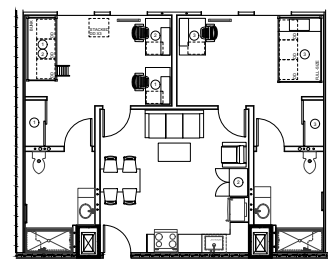
EVGR, Junior 2-Bedroom/2-Bath



EVGR, Premium 2-Bedroom/2-Bath



EVGR, Premium Studio/1-Bath



EVGR, Pilot 2-Bedroom/2-Bath



Rains, Bedroom



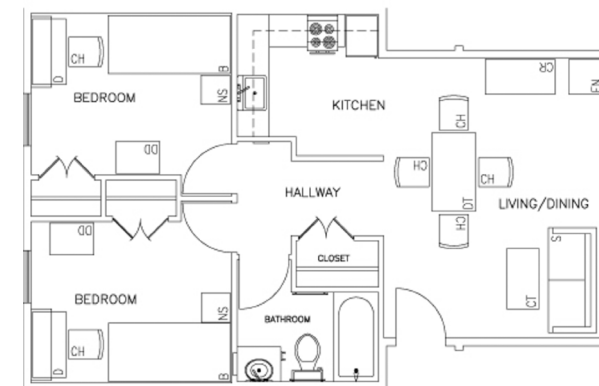
Rains, Living Room

Rains Houses

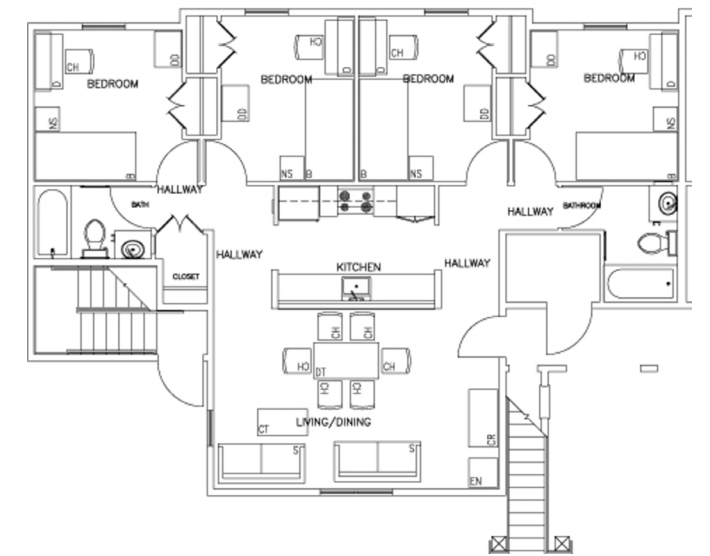
One of Stanford's largest housing complexes, Rains accommodates single students in two-bedroom, one-bath and four-bedroom, two-bath apartments located in three-story buildings clustered around lawns and courtyards. This residence includes fragments of the Hacienda – an adobe winery built in 1875 – and a restored Buttery from the same era.



Rains, Exterior



Rains, 2-Bedroom/1-Bath



Rains, 4-Bedroom/2-Bath

RESIDENCE CHOICES & RATES

SINGLE GRADUATE HOUSING

Residence	# of Bedrooms	# of Baths	Occupancy	Monthly Rate (per person)	Contract Length	# of Spaces	Average Square Footage	Bed Size	Living Room	Kitchen
■ Studio Apartments Private living/bedroom area, bath and kitchen										
Escondido Village Graduate Residences, premium	none	one	single	\$2521/month	full-year, academic-year & quarterly	402	438	queen	living/bedroom	eat-in kitchen with stools
Escondido Village Kennedy Residences, premium	none	one	single	\$2412/month	full-year	37	439	queen	living/bedroom	eat-in kitchen with stools
Escondido Village, standard	none	one	single	\$1960/month	full-year	746	325	full extra-long	living/bedroom	eat-in kitchen with stools
Munger Graduate Residence, premium	none	one	single	\$2788/month	full-year & academic-year	76	500	queen	living/bedroom	dining table & chairs
Munger Graduate Residence, standard	none	one	single	\$2601/month	full-year & academic-year	74	450	full extra-long	living/bedroom	eat-in kitchen with stools
■ Shared Premium Apartments Private bedroom and bath, shared kitchen and living/dining room										
Escondido Village Graduate Residences	two	two	double	\$1961/month	full-year, academic-year & quarterly	672	876	full extra-long	shared	dining table & chairs
Escondido Village Kennedy Residences	two	two	double	\$1930/month	full-year	108	878	full extra-long	shared	dining table & chairs
Munger Graduate Residence	four	four	quadruple	\$2192/month	full-year & academic-year	284	1725	full extra-long	shared	dining table & chairs
Munger Graduate Residence	two	two	double	\$2224/month	full-year & academic-year	60	1050	full extra-long	shared	dining table & chairs
■ Shared Standard Apartments Private bedroom, shared bath, kitchen and living/dining room										
Escondido South, Low-Rise	three	one	triple	\$1363/month	full-year	48	800	twin extra-long	shared	dining table & chairs
Escondido South, Low-Rise	two	one	double	\$1566/month	full-year & quarterly	24	650	twin extra-long	shared	dining table & chairs
Escondido Village, Low-Rise	three	one	triple	\$1363/month	full-year & quarterly	147	800	twin extra-long	shared	dining table & chairs
Escondido Village, Low-Rise	two	one	double	\$1566/month	full-year & quarterly	178	650	twin extra-long	shared	dining table & chairs
Lyman Graduate Residences	two	one	double	\$1566/month	full-year	192	575	twin extra-long	shared	dining table & chairs
Rains Houses	four	two	quadruple	\$1556/month	full-year	284	1000	full extra-long	shared	dining table & chairs
Rains Houses	two	one	double	\$1566/month	full-year	492	500	full extra-long	shared	dining table & chairs
■ Shared Junior Apartments Private bedroom and bath, shared eat-in kitchen, no living room										
Escondido Village Graduate Residences	two	two	double	\$1596/month	full-year, academic-year & quarterly	480	665	full extra-long	none	eat-in kitchen with stools
Escondido Village Kennedy Residences	two	two	double	\$1460/month	full-year	220	679	full extra-long	none	eat-in kitchen with stools
■ Shared Junior Apartments Private bedroom, shared bath, eat-in kitchen, no living room										
Escondido Village, High-Rise and McFarland Mid-Rise	two	one	double	\$1123/month	full-year & academic-year	452	460	twin extra-long	none	eat-in kitchen with stools
■ Pilot: EVGR Two-Bedroom, Triple Apartments A single bedroom with a private sleeping space and bath & a double bedroom with a shared sleeping space and bath*										
Escondido Village Graduate Residences Single	two	two	triple	\$1785/month	full-year	varies	876	full extra-long	shared	dining table & chairs
Escondido Village Graduate Residences Double	two	two	triple	\$1285/month	full-year	varies	876	twin extra-long	shared	dining table & chairs
■ GSB Residences Private entrance, bedroom and bath, shared eat-in kitchen, no living room										
GSB Residences, Jack McDonald Hall	two	two	double	\$2225/month	academic-year	202	700	full extra-long	none	shared
GSB Residences, Schwab Residential Center	two	two	double	\$2175/month	academic-year	102	700	full extra-long	none	shared
■ Off-Campus Subsidized Housing										
Oak Creek	two	one	double	\$1581/month	full-year	118	940	twin extra-long	shared	dining table & chairs
Oak Creek	two	two	double	\$1943/month	full-year	96	1170	twin extra-long	shared	dining table & chairs
All other 2 bedroom apartments	two	varies	double	\$1581/month	full-year	286	900	twin extra-long	shared	dining table & chairs
All other 3 bedroom apartments	three	varies	triple	\$1581/month	full-year	102	1200	twin extra-long	shared	dining table & chairs

Single Graduate Housing

Graduate students attending Stanford without a spouse, partner or children are eligible for Single Graduate Housing. Undergraduate students 25 years of age or older attending Stanford without a spouse, partner or children are also eligible for Single Graduate Housing. Single students are assigned to a variety of single-occupancy studio apartments and shared apartments with two, three or four bedrooms.

The actual number of spaces offered may vary based on applicant demand.

*New Two-Bedroom, Triple Pilot Option Available in EVGR

For 2024-25 there will be a pilot program in which we will offer a small number of EVGR premium two-bedroom, two-bath apartments with triple occupancy. One student will be assigned to a single private bedroom (with a full-sized, extra-long bed) and private bath while the other two students will share the second bedroom (with bunk-able twin-sized, extra-long beds) and bath. Both the single bedroom option and the double bedroom option, that requires two students to share the same sleeping space, will be offered at a reduced rate and will only be assigned to those who specifically list them on their application.

Housing Rates and Contracts

Student housing charges fall below average local area rents. Housing charges, along with house dues and a technology fee, are billed each quarter. If you receive a salary through Stanford Payroll, you can make payments through payroll deduction.

Stanford housing rates and other fees include furnishings, utilities and internet. On-campus housing rates additionally include coinless/cardless laundry and, in most complexes, access to computer clusters and common rooms, such as lounges and game rooms.

Note: Monthly rates are provided for comparison purposes. Students pay for every night that they are in housing. You are billed quarterly based on monthly rates while in continuous housing. Billing will be prorated based on your actual contract start and end dates. More information is available at rde.stanford.edu/studenthousing/graduate-housing-rates-and-billing-information.

- Escondido Village Low-Rises
- Escondido Village Mid-Rises
- Escondido Village High-Rises
- Escondido Village Studios
- Escondido Village Graduate Residences
- Escondido Village Kennedy Residences
- Escondido South
- Lyman Graduate Residences
- Munger Graduate Residence
- Rains Houses
- GSB Residences
- Off-Campus Subsidized Housing

RESIDENCE CHOICES & RATES

COUPLE WITHOUT CHILDREN HOUSING

Residence	# of Bedrooms	# of Baths	Occupancy	Monthly Rate (per apt.)	Contract Length	# of Spaces	Average Square Footage	Bed Size	Living Room	Kitchen
■ Studio Apartments										
Escondido Village Graduate Residences, premium	none	one	couple	\$2521/month	full-year & academic-year	125	438	queen	living/bedroom	eat-in kitchen with stools
Escondido Village Kennedy Residences, premium	none	one	couple	\$2412/month	full-year	70	439	queen	living/bedroom	eat-in kitchen with stools
Escondido Village, standard	none	one	couple	\$1960/month	full-year	75	325	full extra-long	living/bedroom	eat-in kitchen with stools
Munger Graduate Residence, premium	none	one	couple	\$2788/month	full-year & academic-year	86	500	queen	living/bedroom	dining table & chairs
■ One-Bedroom Apartments										
Escondido Village, McFarland Mid-Rise	one	one	couple	\$ 2530/month	full-year	57	450	queen	private	dining table & chairs
Escondido Village, Mid-Rise	one	one	couple	\$2554/month	full-year	249	450	queen	private	dining table & chairs
Escondido Village, Low-Rise	one	one	couple	\$2554/month	full-year	35	450	queen	private	dining table & chairs
GSB Residences, Schwab Residential Center	one	two	couple	\$4350/month	academic-year	38	700	queen	private	dining table & chairs
Munger Graduate Residence	one	one	couple	\$3590/month	full-year & academic-year	18	650	queen	private	dining table & chairs
Escondido Village, Low-Rise with den	one	one	two-student couple	\$2908/month	full-year	5	700	queen	private	dining table & chairs
■ Two-Bedroom Apartments										
Escondido Village, Low-Rise	two	one	couple	\$3132/month	full-year	20	740	queen	private	dining table & chairs
Escondido Village Graduate Residences, premium	two	two	couple	\$3922/month	full-year & academic-year	11	876	queen	private	dining table & chairs
■ Off-Campus Subsidized Housing										
Oak Creek, studio	none	one	couple	\$2456/month	full-year	13	500	queen	living/bedroom	dining table & chairs
All other apartments	one	one	couple	\$2569/month	full-year	87	600	queen	private	dining table & chairs
All other apartments	two	one	couple	\$3163/month	full-year	69	850	queen	private	dining table & chairs

STUDENT WITH CHILDREN HOUSING

Residence	# of Bedrooms	# of Baths	Occupancy	Monthly Rate (per apt.)	Contract Length	# of Spaces	Average Square Footage	Bed Size	Living Room	Kitchen
Escondido Village / Escondido South, Low-Rise	two	one	couple with one to three children or student-parent with one to four children	\$2734/month	full-year	167	740	one queen & one twin extra-long	private	dining table & chairs
Escondido Village / Escondido South, Low-Rise	three	one	couple with two to five children or student-parent with two to six children	\$3304/month	full-year	60	875	one queen & two twins extra-long	private	dining table & chairs
Escondido South, Low-Rise	four	one	couple with three to seven children or student-parent with three to eight children	\$3670/month	full-year	2	1050	one queen & three twins extra-long	private	dining table & chairs
Escondido Village, Low-Rise	one	one	couple with one child or student-parent with one to two children	\$2554/month	full-year	varies	450	one queen	private	dining table & chairs
Escondido Village, Low-Rise with den	one	one	couple with one child or student-parent with one to two children	\$2908/month	full-year	varies	700	one queen	private	dining table & chairs
Escondido Village Kennedy Residences, studio	none	one	student-parent with one child	\$2412/month	full-year	varies	439	one queen	private	eat-in kitchen with stools
■ Off-Campus Subsidized Housing										
Oak Creek	two	one or two	couple with one to three children or student-parent with one to four children	\$2734/month	full-year	34	940	one queen & one twin extra-long	private	dining table & chairs
Oak Creek	one	one	couple with one child or student-parent with one to two children	\$2569/month	full-year	varies	670	one queen	private	dining table & chairs
Oak Creek	none	one	student-parent with one child	\$2456/month	full-year	varies	500	one queen	living/bedroom	dining table & chairs

Couple without Children Housing

Couples without children are eligible for studios, one-, or two-bedroom units. A domestic partnership is defined as two adults who have chosen to share one another's lives in an intimate and committed relationship. Couples housing is not intended for friend pairs, siblings, parents, or members of a student's extended family.

The actual number of spaces offered may vary based on applicant demand.

Student with Children Housing

Students with children are eligible for studios, one-, two-, three-, or four-bedroom units depending on the number of occupancy-eligible members of the family (student, child(ren) and spouse or domestic partner). For students with children, Stanford uses an occupancy limit of two persons per studio, and two persons per bedroom + one for larger units. For example, depending on availability, 1) a family comprised of a student-parent and child is eligible to live in a studio, one-bedroom, or two-bedroom; 2) a family comprised of a couple and one child is eligible to live in a one-bedroom or two-bedroom; 3) a family comprised of a couple and three children is eligible to live in a two-bedroom, three-bedroom or four-bedroom.

The two-, three-, and four-bedroom Escondido Village low-rise apartments have fenced in patios that open on to gated play areas. The one-bedroom, one-bedroom with den and studio apartments do not have fenced in patios.

Stanford does not provide housing for extended families—including students' parents, siblings or live-in childcare staff. If your parents or other family members are moving to the Stanford area, you must make alternate housing arrangements for them.

Housing Rates and Contracts

Student housing charges fall below average local area rents. Housing charges, along with house dues and a technology fee, are billed each quarter. If you receive a salary through Stanford Payroll, you can make payments through payroll deduction.

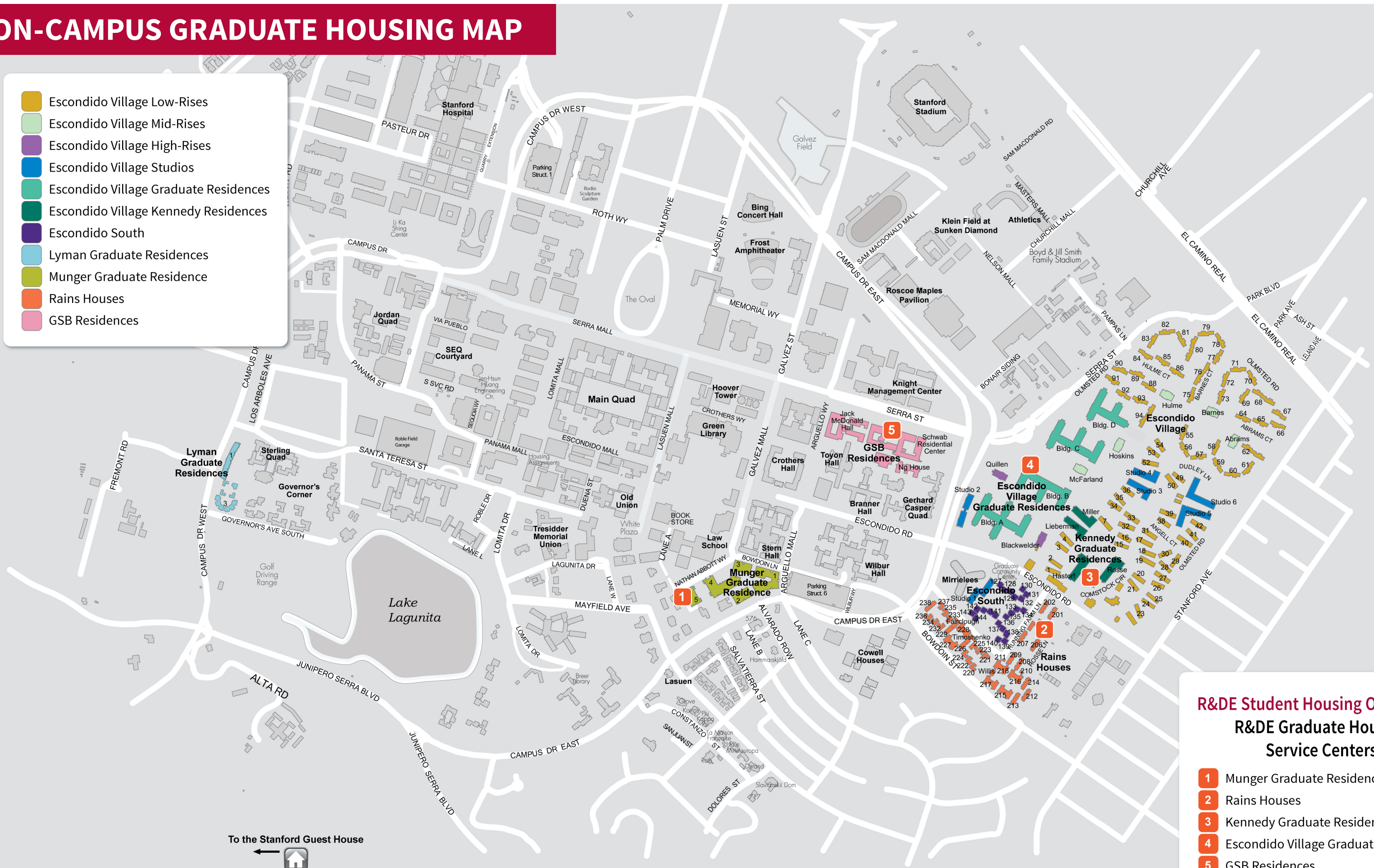
Stanford housing rates and other fees include furnishings, utilities and internet. On-campus housing rates additionally include coinless/cardless laundry and, in most complexes, access to computer clusters and common rooms, such as lounges and game rooms.

Note: Monthly rates are provided for comparison purposes. Students pay for every night that they are in housing. You are billed quarterly based on monthly rates while in continuous housing. Billing will be prorated based on your actual contract start and end dates. More information is available at rde.stanford.edu/studenthousing/graduate-housing-rates-and-billing-information.

- Escondido Village Low-Rises
- Escondido Village Mid-Rises
- Escondido Village Studios
- Escondido Village Graduate Residences
- Escondido Village Kennedy Residences
- Escondido South
- Munger Graduate Residence
- GSB Residences
- Off-Campus Subsidized Housing

ON-CAMPUS GRADUATE HOUSING MAP

- Escondido Village Low-Rises
- Escondido Village Mid-Rises
- Escondido Village High-Rises
- Escondido Village Studios
- Escondido Village Graduate Residences
- Escondido Village Kennedy Residences
- Escondido South
- Lyman Graduate Residences
- Munger Graduate Residence
- Rains Houses
- GSB Residences



- R&DE Student Housing Operations**
R&DE Graduate Housing
Service Centers
- 1 Munger Graduate Residence
 - 2 Rains Houses
 - 3 Kennedy Graduate Residences
 - 4 Escondido Village Graduate Residences
 - 5 GSB Residences

To the Stanford Guest House

OFF-CAMPUS GRADUATE HOUSING OPTIONS

OFF-CAMPUS APARTMENTS

Depending on overall demand, Stanford may house students in apartment communities within Palo Alto, Menlo Park and Redwood City. These off-campus housing choices will be available to rank on your housing application. **Assignment to these spaces will be based on the overall applicant demand.** Because we do not know the number of spaces we will assign off-campus, students listing these choices should also rank on-campus housing options. It is important to note that students assigned to these off-campus complexes may have to consolidate within a complex or relocate to campus during the academic year. **Students in off-campus subsidized housing are not able to renew their contracts and must join the Lottery each year.**

Students are also not eligible to sublicense their rooms. Each location promotes a sense of community and is accessible to public transportation (see transportation.stanford.edu/transit) and/or bicycle routes to campus. Most communities are within walking distance of shops and restaurants, and some are on or near a Stanford Marguerite shuttle route. Amenities vary and may include swimming pools, hot tubs, tennis courts, exercise rooms and rentable community rooms. Visit rde.stanford.edu/studenthousing/campus-subsidized-apartments for further information and photos.

Most options for single students are two-bedroom, double occupancy and three-bedroom, triple occupancy

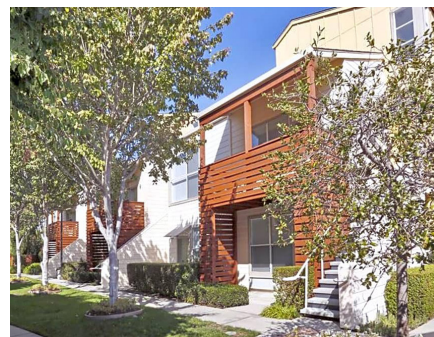
apartments that allow students to have their own bedroom in a shared apartment.

Options for couples include studio, one-bedroom and a limited number of two bedroom apartments in Palo Alto and Menlo Park.

Oak Creek is the closest property to campus with the largest concentration of students. Its many social activities lend the complex a resort-like atmosphere. Apartments in Menlo Park are either near downtown or in the Sharon Heights neighborhood. Apartments in Redwood City are further away from Stanford, but are newly built.



Locale



Montage Apartments



Stanford Villa



Seven Oaks Apartments



Sand Hill Place



Oak Creek Apartments

STANFORD OFF-CAMPUS APARTMENT COMPLEX LOCATIONS

Off-Campus Housing Locations

- (A) Locale
- (B) Laurel Grove Apartments
- (C) Waverley Street Apartments
- (D) 825 Menlo Apartments
- (E) Menlo Park West
- (F) Middle Park
- (G) Oak Creek Apartments
- (H) Sand Hill Place
- (I) Sharon Grove
- (J) Seven Oaks
- (K) 241 Curtner Avenue
- (L) Stanford Villa
- (M) Montage Apartments

OFF-CAMPUS HOUSING OPTIONS FOR 2024-25

IMPORTANT NOTE ABOUT OFF-CAMPUS HOUSING

Students can rank off-campus housing choices in their lottery application, but they should also rank on-campus options as well since off-campus availability will depend on application demand. Off-campus residents may not renew for 2024-25.

OFF-CAMPUS HOUSING DETAILS

For photos, sample floor plans and details about each complex, please visit the Housing Options at rde.stanford.edu/studenthousing/graduate-housing-options.

LOOKING FOR OFF-CAMPUS HOUSING ON YOUR OWN

Rental housing is available near Stanford, but the university is located in a highly desirable suburban area in the heart of Silicon Valley. Consequently, off-campus rental rates are relatively high compared to many other regions of the United States. More affordable options can be found if you look a little further from campus.

If you expect to live off campus, plan to start your housing search at least a month in advance.

We have partnered with Places4Students to provide local rental listings accessible only to Stanford students and affiliates. To view the rental listings, you will either need a Stanford email address or you can contact Community Housing with proof of your affiliation for a temporary password. For further instructions, please visit R&DE Student Housing's Community Housing website at offcampushousing.stanford.edu.

PARKING AND TRANSPORTATION

Alternative transportation programs are offered to support residents who are able to go car-free. For more details visit transportation.stanford.edu.

For information about parking availability near residences and around campus, please visit: transportation.stanford.edu/parking.

More information about the 2024 calendar year program is available on the Stanford Transportation website.



NEW GRADUATE STUDENT ORIENTATION

The Graduate Life Office (GLO) coordinates New Graduate Student Orientation (NGSO) to welcome and orient new graduate students to Stanford. NGSO programs are open to all new graduate students. The goal for NGSO is to inform and connect new graduate students to useful campus resources that will assist you during your time as a graduate student. Currently, logistics and specifics for NGSO are in discussion. Please check the GLO website for more information. glo.stanford.edu/ngso.

MOVING IN

- Students select their move-in date on their housing application and generally move in during business hours. Contact your R&DE Housing Service Center if you need to check in earlier than the established move-in dates or outside of posted service center hours: housingservicecenter.stanford.edu.
- If you cannot check in during our published business hours, please call (650) 725-1602 for after-hours check-in assistance. When calling that number, a representative of the R&DE Community Access Response Enterprise (CARE) will meet you at the respective service center or designated area to provide you with your apartment keys. Please have your picture ID ready.
- Housing charges will be adjusted to reflect the date you select on your housing application. If you are approved by your Housing Service Center to move in before the date you select on your application, you will be charged for those additional days in housing.
- The professional schools have special early arrival dates that allow them to participate in their orientation events.
- You will have the opportunity to share contact information with your assigned roommate prior to checking in. While we encourage you to take advantage of this opportunity, it is not required and both roommates must opt in and share contact information in order to connect.

GRADUATE STUDENT GATEWAY

The Graduate Student Gateway gradgateway.stanford.edu is a one-stop resource for incoming grad students providing important information before and after your arrival.

STUDENTS WITH SCHOOL-AGED CHILDREN

The Palo Alto Unified School District (PAUSD) is one of the top districts in the United States, so it can be competitive to secure a space in the schools near campus for your child.

- You can begin the registration process once you have your apartment address (sent to you by early July) and finalize it after you move in.
- Once you have your address, go to www.pausd.org/enrollment/registration for information on how to register your child for school and what documents you need to provide.
- Although you won't have utility bills while living on campus, you can still obtain a bank account and cell phone bill with your new address.
- It is important that you ensure your child has had the appropriate immunizations so registration is not delayed. (Go to pausd.org for details). The TB Risk Assessment form must be completed by a U.S. health professional. International students should plan on doing this as soon as possible after arrival in the U.S.
- There is a small possibility that there will not be space at the closest school to your home. If so, you will be assigned to another PAUSD school and have priority to move to the closest one when space is available.

CAMPUS DINING

R&DE Stanford Dining, Hospitality & Auxiliaries (SDHA) sdha.stanford.edu

SDHA, is a best-in-class dining and hospitality program serving over 25,000 meals a day in over 100+ locations, including dining halls, self-op row house dining, co-op dining, suite dining, branded concepts, athletic dining, a kosher kitchen, late night dining at Lakeside, cafés, vendor partner programs, commissary production kitchen, a pub, a mobile food vending program, convenience markets, a sweet shop, catering operations, executive dining, athletic concession venues, and teaching kitchens. SDHA also oversees the Stanford Food Institute, the Stanford Flavor Lab, the campus BeWell community gardens, the Stanford Food Pantry, and a staff training and development center.

As the dining department of the world's premier research and teaching institution, SDHA has been recognized for its culinary excellence with awards such as the prestigious industry Ivy Award by Restaurants and Institutions for its leadership role.

SDHA Cafés and Markets – Forbes Family Café, Olives Café, Med Café, The Axe & Palm, Law School Café, SLACafé, EVGR Pub & Beer Garden, Decadence, Kikka Sushi, Curry Up Now, Starbucks, Panda Express, Subway, Chun Yang Boba Tea, Verve Coffee and Ray's Grill – offer convenient meal options for every taste. In addition, the Market at Munger, EVGR Marketplace and the U2 Mini Market at Tresidder offer one-stop shopping for campus-living convenience items, including fresh produce, grab-and-go sandwiches and salads, grocery staples, sundries and more.

For SDHA café and market locations, [view our locations](#).

SDHA Dining Hall Meal Plans – SDHA is *Committed to Excellence* by providing meal programs that support the development of communities within residences and across neighborhoods. SDHA dining hall meal plans offer significant value, the highest quality food and flexibility of dining across campus to create new connections and allow students to engage in intellectual and lively discussions over meals with each other, faculty, and members of the Stanford community. Dining hall locations and hours can be viewed [online here](#).

SDHA prides itself on providing *nutritious, sustainable, and delicious* food choices — embodying the *Menus of Change Principles*, as part of its leadership of the *Menus of Change University Research Collaborative* — to meet the wide variety of dietary needs within our diverse Stanford community. The Eat Well @Stanford program provides support to students dining with food allergies, religious requirements, medical needs, vegan/vegetarian diets, and other nutritional needs. For more information on navigating your dietary needs please contact nutritionist@stanford.edu.



SDHA also has a long history of award-winning sustainability leadership. *Our One Plate, One Planet* vision captures the full breadth of our pioneering sustainable food program, which represents bold, long-term commitments to climate action and racial equity. It celebrates the power of social consciousness, operational innovation, and individual food choices in promoting sustainable food systems. We believe that with each plate we serve, and each meal our students eat, we have the opportunity to create a better future for this planet. Learn more about our *Sustainable Food Ethos* that guides our purchasing decisions, the positive impact we have through our menu and operations in our *Sustainable Food @Stanford By the Numbers infographic*, and practical tips for *How to Eat Sustainably on Campus*.

Grad Student Meal Plans Information – Grad students and post-docs can purchase meals for breakfast, brunch, lunch, and dinner as meal blocks for use in any open dining hall or can purchase any of the undergraduate dining hall meal plans. *Meals plans are also available for spouses and partners of grad and post-doc students*. Visit our dining hall locations and hours page for more information on where meal plans can be used. **Meal Plan Dollars** may be used at any dining hall location, select SDHA cafés and markets, and late night operations, including Late Night at Lakeside and The Axe & Palm. **Graduate Meal Plan blocks expire on August 16. Refunds for any unused meals may be requested up to their expiration date. Any remaining meals that have not been refunded by request of the account holder will be expired and forfeited. You have the flexibility to cancel your voluntary meal plan whenever you choose. Please note, an administrative fee of \$15 applies upon cancellation. To ensure you get the most value from your plan, we recommend that you select meal block options that closely align with your dining habits. This approach helps in effectively managing your meal plan. Please note that no refunds are available for balances of \$15 or less. Meal blocks are non-transferable.* Grad students can also purchase *Apartment meal plans* or the *Standard Dining Hall Meal plans*.

Students are not allowed to enter a SDHA dining hall without a valid Stanford ID card. If you lose your Stanford ID card, you must report the loss immediately to the Stanford ID Card Office.

Meal plans are purchased *online*. Please allow two business days from the date of purchase for your meals and dining hall access to be activated. For questions or further assistance, please email diningplans@stanford.edu.

2024-25 MOVE-IN DATES

QUARTER	DATE	STUDENT
Autumn	August 9, 2024	Students with school-age children
	August 16, 2024	Pre-clinical MD and MSPA students
	August 23, 2024	Early arrival option for all students
	August 26, 2024	First-year law students
	August 30, 2024	Early arrival option for all students
	September 6, 2024	Early arrival option for all students
	September 11, 2024	Residents of the GSB Residences
Winter	September 11, 2024	First-year GSB students
	September 13, 2024	All students
	January 3, 2025	All students
Spring	March 28, 2025	All students
Summer	June 21, 2025	All students

Cardinal Dollars are similar to Meal Plan Dollars and are meant to be used in SDHA cafés and markets, the Stanford Stadium, Sunken Diamond, and Maples Pavilion. Stanford students pay no sales tax on meal purchases (applicable to tax code) when presenting their valid student ID at time of service. Proceeds from SDHA cafés, markets and concessions, help offset increases in room and board, and support student programs. Cardinal Dollar plans *expire on August 16 and are non-transferable. Refunds for any Cardinal Dollars may be requested by the account holder up to their expiration date. Any remaining Cardinal Dollars that have not been refunded by request will be expired and forfeited.* Visit cardinaldollars.stanford.edu.

Food Allergies & Special Dietary Needs – SDHA offers a variety of accommodations for students with food allergies and specialized dietary requirements through the Food Allergies @Stanford program. We have a dedicated nutrition team to support hundreds of Stanford students, staff and guests with food allergies and special dietary needs.

SDHA has proudly partnered with **FARE (Food Allergy Research & Education)** to help improve the college experience for students with food allergies through enhanced awareness, accommodations, and training. The SDHA nutrition team reviews ingredients, recipes, and menus for allergens, trains R&DE staff on food allergy accommodations, and provides nutrition counseling and education for students to help with managing their dietary needs on campus. Stanford is also home to nut-sensitive dining programs at Ricker and Stern dining halls.

SDHA identifies the top allergens (coconut, egg, fish, milk, peanuts, sesame, shellfish, soy, tree nuts, wheat) in the dining halls. We call out the allergens as well as indicate the potential for cross-contact in in-house or external production. Daily menus are published **online**, and food labels identify ingredients, allergens as well as dietary traits like vegan (**VGN**), vegetarian (**V**), gluten-free (**GF**) or Halal at the point of service.

The Food Allergies @Stanford support team includes the SDHA nutritionists, chefs, and managers who work together to ensure students with food allergies and dietary needs have an exceptional dining experience. For more information about how to get support with your food allergy or special dietary need, view our **Food Allergy Information Sheet** or reach out to nutritionist@stanford.edu.

Religious Dietary Accommodations – We strongly encourage students with religious dietary needs to plan ahead and coordinate any necessary accommodations before arriving to campus. Read below to learn more about the accommodations that are available through SDHA. Students with religious dietary needs should contact the **Office for Religious and Spiritual Life (ORSL)** to discuss how their needs can be met on campus. It is important to reach out to discuss your specific needs prior to arriving on campus.

Kosher Dining – SDHA offers a seven-day **Glatt kosher lunch and dinner program** at Florence Moore Dining in partnership with students, the **ORSL**, Hillel, and Residential Education. All meals are prepared in our kosher kitchen and served under the guidance of a mashgiach. Shabbat and Sabbath meals are prepared in Florence Moore and served in Hillel. To learn more about Kosher Dining, please visit the **Kosher Dining webpage** or contact nutritionist@stanford.edu.

Halal Dining – SDHA also offers a variety of food options to accommodate the dietary needs of Stanford's Muslim community. The chicken and beef served in the dining halls is certified halal unless noted otherwise on the label and we avoid the use of alcohol in our recipes. In addition, during Ramadan, Suhoor to-go boxes and Iftar specials are provided in the dining halls to keep students well-nourished during fasting. Graduate students with R&DE SDHA breakfast and dinner meal plan blocks, will have access to these accommodations through the completion of Ramadan. To learn more about halal dining visit **halal dining** or contact nutritionist@stanford.edu.

Other Religious Dietary Requirements – Students who purchase meal plan blocks who have religious dietary needs should consult with the **ORSL** about how their needs can be accommodated at Stanford prior to arriving on campus. Some religious dietary requirements can be accommodated in the dining halls. However, students with highly specific or complex restrictions may find it difficult to navigate these needs.

R&DE SDHA Food Pantry Pop-up – SDHA is pleased to partner with Second Harvest of Silicon Valley Food Bank to address campus food insecurity in the graduate student community. Each student household is eligible to receive produce, dairy, meat or poultry and non-perishable items at no cost. The Stanford Food Pantry Pop-up on campus is located in the EVGR C outdoor patio area, and is hosted on the second Monday of each month from 11am to 2:30pm. Students who are interested can sign up through our website: rde.stanford.edu/food-pantry-pop-up which provides more information on upcoming events and volunteering information.



CONTACT INFORMATION

R&DE Student Housing Assignments
408 Panama Mall, Suite 101, Stanford, CA 94305
studenthousing.stanford.edu
(650) 725-2810

For questions, submit a ServiceNow request at stanford.service-now.com/services

Bechtel International Center
bechtel.stanford.edu

For questions relating to issuance of 1-20s/DS-2019s, applications for visas and other immigration related questions

Community Housing
offcampushousing.stanford.edu
communityhousing@stanford.edu

Graduate Life Office
glo.stanford.edu
(650) 736-7078

Office of Accessible Education
oae.stanford.edu
(650) 723-1066

R&DE Student Housing Service Centers
housingservicecenter.stanford.edu

R&DE Stanford Dining, Hospitality & Auxiliaries
sdha.stanford.edu

Stanford Guest House
guesthouse.stanford.edu
(650) 926-2800

Visitor Information
visit.stanford.edu
(650) 723-2560

Parking & Transportation
transportation.stanford.edu
(650) 723-9362

Office of the Senior Associate Vice Provost for R&DE and Senior Adviser to the Provost on Equity and Inclusion
rde.stanford.edu
(650) 721-2956

